

schwa-medico was founded in 1975 and has since then developed into a medium-sized company of approximately 350 employees and several regional offices all over Germany. schwa-medico is also represented by its own branches in Austria, France, The Netherlands, Switzerland and Hungary and has distributors in many other countries.

schwa-medico's main business and interests lie in the field of pain therapy and acupuncture. schwa-medico distributes all kinds of TENS machines and NMES portable devices as well as acupuncture needles and accessories like acupuncture stimulators and point detectors. Among our clients are medical doctors, specialised pain therapist, physiotherapists, alternative medical practitioners as well as hospitals.

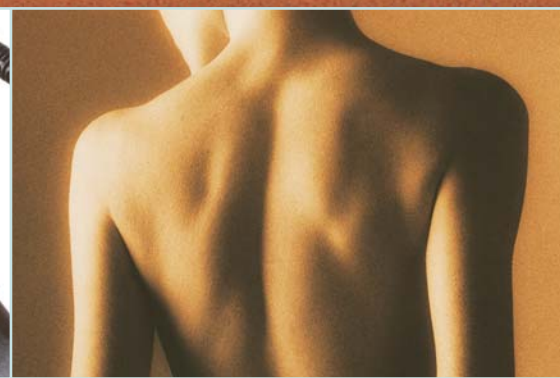
schwa-medico has been Germany's market leader for portable TENS devices for many years.

Product groups of schwa-medico in pain management:

- Portable TENS devices for pain therapy
- Portable muscle stimulators
- Portable incontinence devices
- Portable ultrasonic units
- Portable and stand-alone laser devices
- Acupuncture needles and accessories

In addition to our principle of constant development and innovation we are committed to perform optimal service in order to meet the demands and wishes of our customers today and tomorrow.

SONIC vital 2 ULTRASOUND THERAPY 1 and 3 MHz



PORTABLE · PRACTICE · POWERFUL · PROGRAMMABLE

schwa-medico
Export Department

schwa-medico GmbH Export Department
Wetzlarer Strasse 41-43
35630 Ehringshausen · Germany
Phone: +49 6443 8333-113
Fax: +49 6443 8333-119

export-sm@schwa-medico.com
www.schwa-medico.com

schwa-medico

SONIC vital 2 - ULTRASOUND

PORTABLE ULTRASOUND DEVICE

The SONIC vital 2 is a small, portable and light-weight ultrasound device, ideal for physiotherapy clinics, hospitals and home visits.

PRACTICE USE OF THE SONIC vital 2

Developed in co-operation with medical doctors, teachers and physiotherapists the SONIC vital 2 offers optimised and quick usage. Its 60 programmes cover all indications that ultrasound is recommended for. Besides the integrated programmes one can also modify and store individual parameters under the program mode. By means of its clear keyboard, the rotation knob and its 6 digital displays, the SONIC vital 2 shows in a glance the treatment time, selected program mode (pulsed or continuous), transmission of ultrasound in Watt and the average intensity in Watt/cm².

PERFORMANCE OF THE ULTRASOUND 2 HEADS HIGH TECHNOLOGY – EASY CONTACT CONTROLE

The SONIC vital 2 can be connectid with 2 ultrasound applicators:

- 1MHz, diameter 4 cm² for the treatments of deeper tissue
- 3 MHz, diameter 1 cm² for superficial treatments

The automatic contact control allows a safe application. One can easily interrupt and resume the treatment by simply take of the ultrasound head from the skin. The treatment time will automatically pause. The different sizes and wave lengths of the applicators allow the treatment of all skin areas, also small surfaces that need an adapted head to ensure a perfect contact and maximum benefit of ultrasound application.

ULTRASOUND INTENSITY

The performances of 3 Watts/cm² in pulsed mode and 2 Watts/cm² in continuous mode shows an excellent BNR report and guarantee a maximum therapeutic effect.



WATER RESISTANT APPLICATORS

Both applicators of the SONIC vital 2 can either be used with direct skin contact in combination with ultrasound gel or for underwater therapy without ultrasound gel.

ULTRASOUND FOR MEDICAL USE

Made in Germany in co-operation with Pierenkemper GmbH, a manufacturer of medical equipment for more than 30 years, the SONIC vital 2 offers the latest technologies in ultrasound therapy. For the SONIC vital 2 we issue a guarantee of 2 years.

ULTRASOUND TECHNICAL SPECIFICATIONS

Frequency _____ 1 and 3 MHz
 Duty cycle _____ 10%, 20%, 30%, 40%, 50%, 100%
 Pulsed frequency _____ 100 Hz
 Max. average intensity _____ 0-2 W/cm² in continuous mode
 Max. average intensity _____ 0-3 W/cm² in pulsed mode
 Max. peak intensity _____ 10 Watts
 Treatment time _____ 0-30 minutes
 Contact control visualisation_ LED on the treatment head
 Weight _____ 2 kg
 Dimensions (L x l x h) _____ 20 cm x 15 cm x 5 cm

Ultrasound head: model SVH1

ERA _____ 4,0 cm² at 1 MHz
 BNR _____ < 5
 Wave type _____ collimating

Ultrasound head: model SVH3

ERA _____ 1,0 cm² at 3 MHz
 BNR _____ < 5
 Wave type _____ collimating